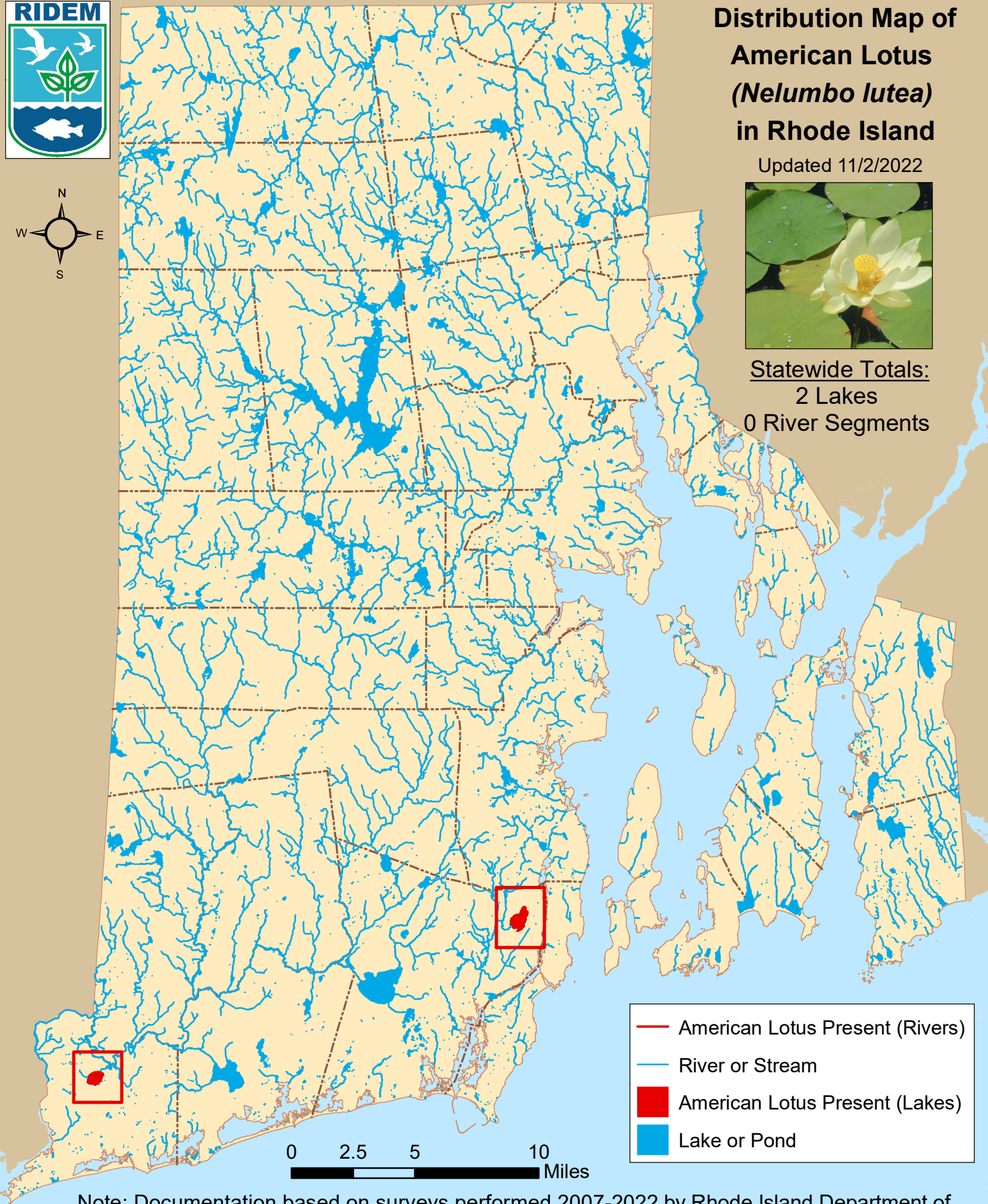


Distribution Map of American Lotus (*Nelumbo lutea*) in Rhode Island

Updated 11/2/2022



Statewide Totals:
2 Lakes
0 River Segments



Note: Documentation based on surveys performed 2007-2022 by Rhode Island Department of Environmental Management (RIDEM) Office of Water Resources. AIS refers only to those plant species present in the floating and submergent plant communities. More information available online: <http://www.dem.ri.gov/programs/water/quality/surface-water/aisplant.php>



Distribution of American lotus (*Nelumbo lutea*) in RI

river segments listed first alphabetically; then lakes listed by city or town

<u>Town</u>	<u>Waterbody Name</u>	<u>First documented</u>	<u>Last Surveyed</u>
<u>South Kingstown</u>			
1	Indian Lake	7/24/2009	8/19/2022
<u>Westerly</u>			
2	Chapman Pond	8/10/2010	8/10/2022