



Clear River (Segment 5D)

Watershed Description

This **TMDL** applies to the Clear River assessment unit (RI0001002R-05D), a 0.9-mile long impaired river segment located in Burrillville, RI (Figure 1). The Town of Burrillville is located in Providence County in the northwestern corner of Rhode Island. The Clear River is situated in the center of town and the watershed is presented in Figures 2 and 3 with land use types indicated.

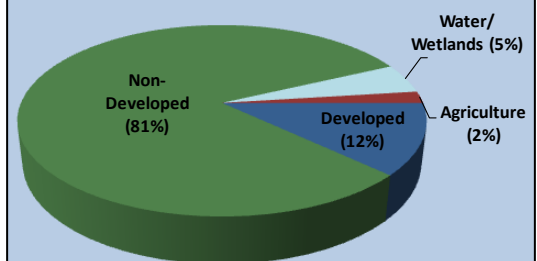
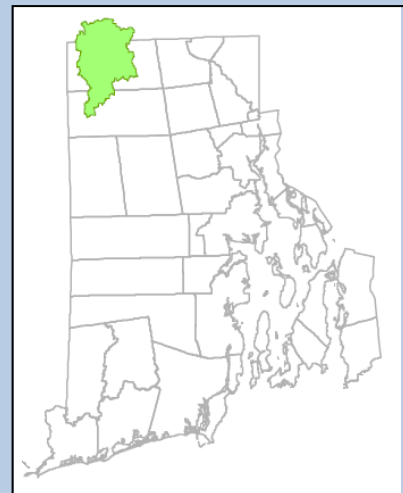
The headwaters of the Clear River begin in the western portion of Burrillville and flow east into the Wilson Reservoir. This section of the river is another impaired segment (Segment 5C) that ends before the Burrillville Wastewater Treatment Facility (WWTF).

This impaired segment of the Clear River (Segment 5D) begins at the WWTF, flows east under RI Route 102 (Broncos Highway), and parallel to Whipple Avenue. The river then flows south, through a forested area, and then eastward under Victory Highway near its intersection with Marcoux Way. The impaired segment then flows into an impoundment where it is met by the Chepachet River. The confluence of the Clear River and Chepachet River form the Branch River.

The Clear River watershed, including both bacteria impaired segments, covers 45.2 square miles. As shown in the aerial image of Figure 3, non-developed lands occupy a large portion (81%) of the watershed. Developed uses (including residential commercial, and transportation uses) contribute approximately 12% of the land area. Impervious surfaces cover a total of 4.8%. Wetland and surface waters occupy 5%, and only a very small portion of the watershed (2%) is used for agriculture.

Assessment Unit Facts *(RI0001002R-05D)*

- **Town:** Burrillville
- **Impaired Segment Length:** 0.9 miles
- **Classification:** Class B
- **Direct Watershed:** 45.2 mi² (28,917 acres)
- **Impervious Cover:** 4.8%
- **Watershed Planning Area:** Branch - Blackstone (#8)



Watershed Land Uses

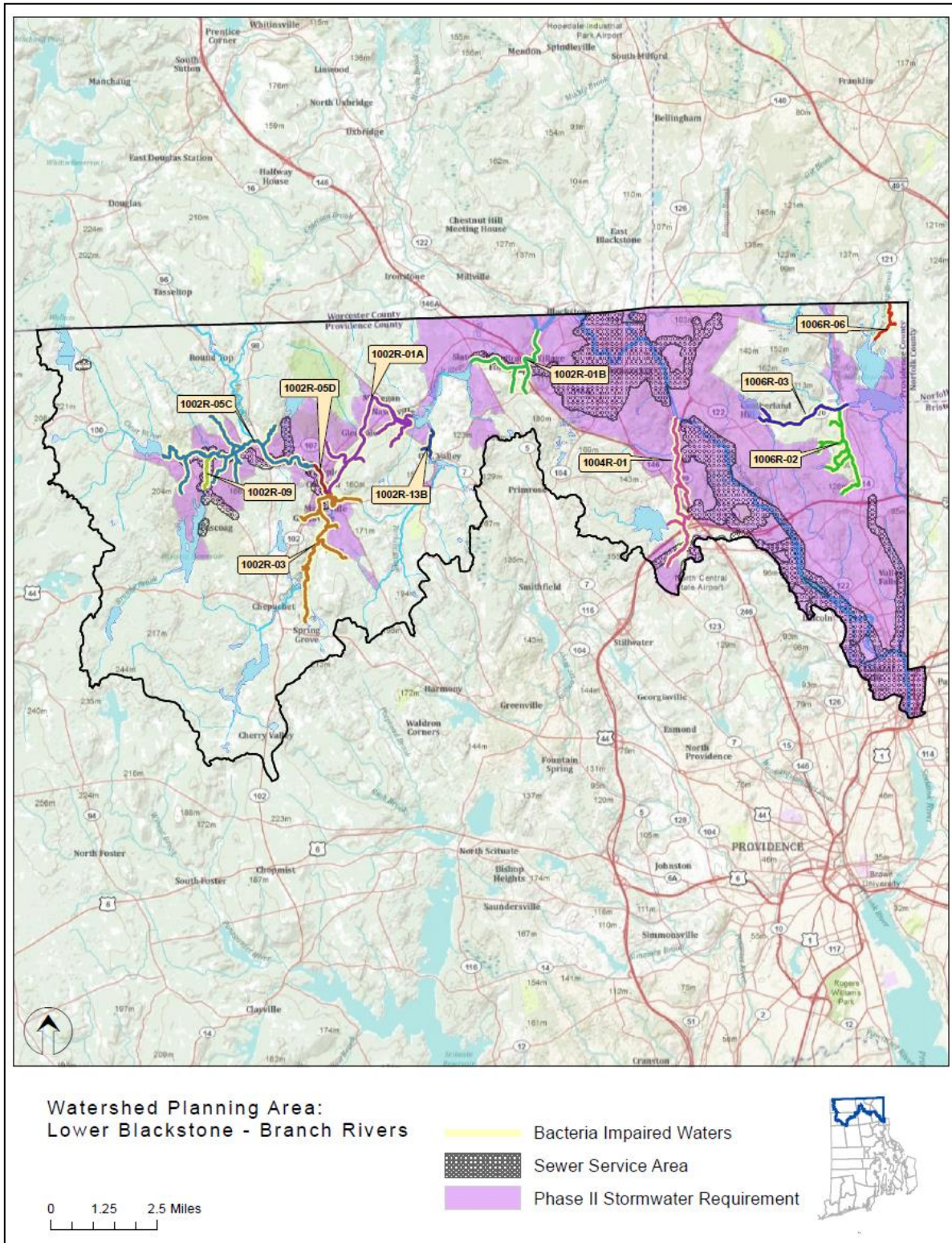


Figure 1: Map of the Branch-Blackstone Watershed Planning Area with impaired segments addressed by the Statewide Bacteria TMDL, sewered areas, and stormwater regulated zones.

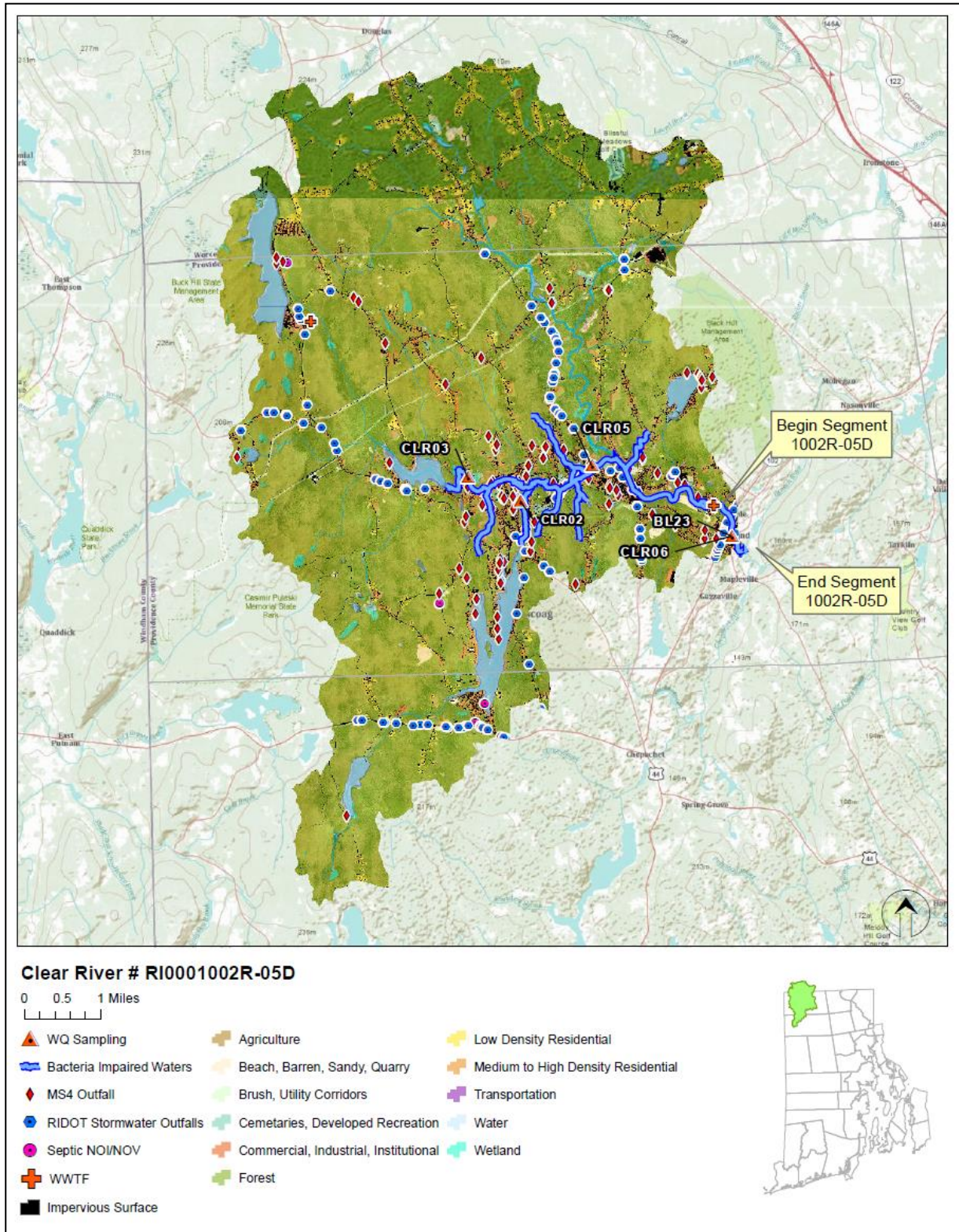


Figure 2: Map of the Clear River watershed with impaired segments, sampling locations, and land cover indicated.

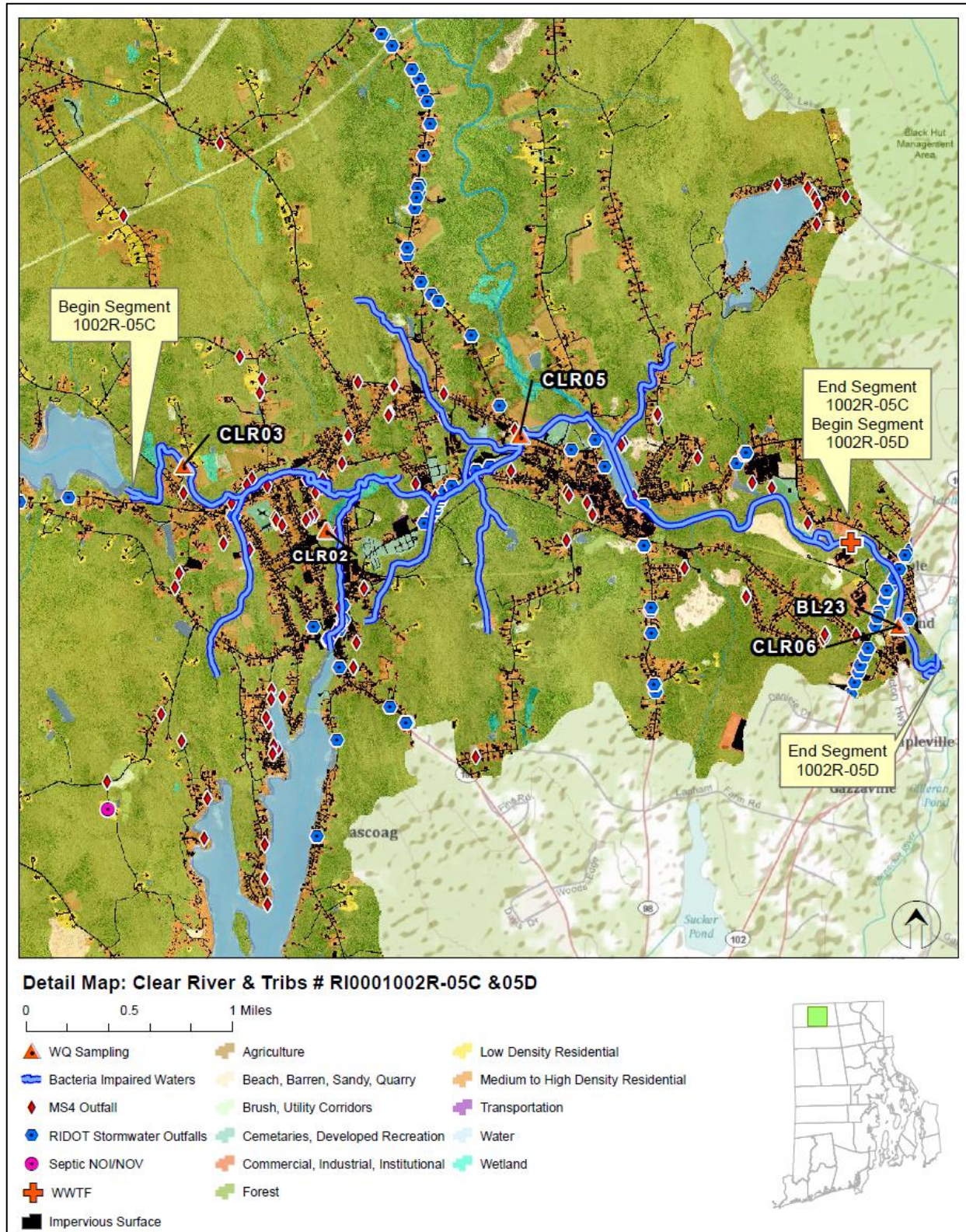


Figure 3: Zoomed map of the Clear River watershed with impaired segments, sampling locations, and land cover indicated.

Why is a TMDL Needed?

This section of the Clear River is a Class B1 fresh water river with applicable designated uses of primary and secondary contact recreation and fish and wildlife habitat. Primary recreational activities may be impacted from pathogens from approved discharges in Class B1 waters. However, all Class B criteria must be met (RIDEM, 2009). This segment of the Clear River receives discharges from the Burrillville Wastewater Treatment Facility.

From 2008-2009, water samples were collected from a single sampling location (CLR06) and analyzed for the indicator bacteria, enterococci. The water quality criteria for enterococci, along with bacteria sampling results from 2008-2009 and associated statistics are presented in Table 1. The geometric mean was calculated for station CLR06 and exceeded the water quality criteria for enterococci. All samples were taken in dry-weather conditions.

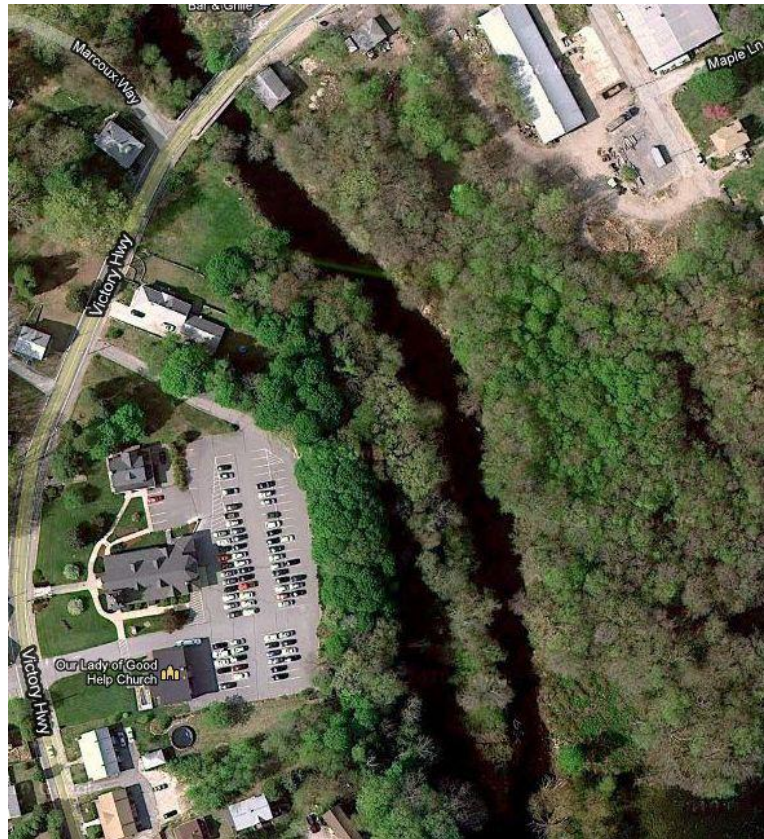


Figure 4: *Partial aerial view of the Clear River watershed, shortly upstream of its confluence with the Chepachet River. (Source: Google Maps)*

Due to the elevated bacteria measurements presented in Table 1, this segment of the Clear River does not meet Rhode Island’s bacteria water quality standards, was identified as impaired, and was placed on the 303(d) list (RIDEM, 2008). The Clean Water Act requires that all 303(d) listed waters undergo a TMDL assessment that describes impairments and identifies the measures needed to restore water quality. The goal is for all water bodies to comply with state water quality standards.

This segment of the Clear River has also been assessed by RIDEM as not meeting water quality standards for lead, biodiversity, and non-native aquatic plants (RIDEM, 2008). No TMDLs have been completed for these impairments.

Potential Bacteria Sources

There are several potential sources of bacteria in the Clear River watershed including failing onsite wastewater treatment systems, illicit discharges, wastewater treatment effluent, wildlife and domestic animal waste, and stormwater runoff from developed areas.

Onsite Wastewater Treatment Systems

The majority of the Clear River watershed is undeveloped and does not have access to Burrillville's municipal sewer system (Figure 1). The only areas of the watershed serviced by municipal system are the small portions of the watershed surrounding the impaired segment in the villages of Pascoag, Harrisville, and Mapleville. While these areas are adjacent to the impaired segments of the Clear River and do not rely on onsite wastewater treatment systems (OWTS), the upper reaches of the river which ultimately drain into this segment are surrounded by residents relying on OWTS, such as septic systems and cesspools.

Failing OWTS can be significant sources of bacteria by allowing improperly treated waste to reach surface waters (RI HEALTH, 2003). If systems are improperly sized, are malfunctioning, or are in soils poorly suited for septic waste disposal, bacteria can easily be transported to adjacent surface waters (USEPA, 2002). The soils in much of the Clear River watershed are not well suited for OWTS due to shallow groundwater aquifers, flooding potential, slow percolation, and relatively steep slopes (Town of Burrillville, 2005). As shown in Figures 2 and 3, multiple OWTS Notices of Violation/Notices of Intent to Violate (NOI/NOV) have been issued by the RIDEM Office of Compliance and Inspection within the Clear River watershed.

Sewer Leaks

Another potential source of bacterial contamination is leaks within the municipal sanitary sewer system near the Clear River. If there are any leaks within this sewer, the waste from the sewer, containing high levels of bacteria, may enter the river. Spills and leaks from sanitary sewer systems can lead to human health issues from high bacteria levels, and can potentially cause significant ecological damage (Mallin *et. al.*, 2007).

Burrillville Wastewater Treatment Facility

This impaired segment of the Clear River begins where the Burrillville WWTF discharges to the river. The facility is an advanced secondary activated sludge system with phosphorus removal. RIDEM continuously monitors the performance of the facility and rates the facility's performance annually. The facility was found to be in "excellent condition" in 2000. It was also awarded a rating of 10, the highest

rating possible (WFP, 2002). Strict regulations on treatment facilities, the Burrillville WWTF's performance record, and the existence of an upstream impaired segment suggest that it is not a source of the bacterial contamination to this segment of the Clear River. It is recommended that RIDEM's annual reviews of the performance of the WWTF continue to ensure the quality of the effluent leaving the WWTF.

Wildlife and Domestic Animal Waste

Domestic animals within the Clear River watershed represent a potential source of bacteria. High density residential developments are located directly adjacent to the River in several areas, especially surrounding the impaired segment. If residents are not properly disposing of pet waste, bacteria from that waste could enter and contaminate the stream.

Wildlife, including waterfowl, may be a significant bacteria source to surface waters. With the construction of roads and drainage systems, these wastes may no longer be retained on the landscape, but instead may be conveyed via stormwater to the nearest surface water. As such these physical land alterations can exacerbate the impact of these natural sources on water quality. Sections of the Clear River watershed consist of large tracts of contiguous forest land providing sanctuary to a variety of wildlife including squirrel, deer, and waterfowl (Town of Burrillville, 2005). Many of these forested areas surround the River, concentrating wildlife around the banks.

Developed Area Stormwater Runoff

The Clear River watershed has an impervious cover of 4.7%. Impervious cover is defined as land surface areas, such as roofs and roads that force water to run off land surfaces, rather than infiltrating into the soil. Impervious cover provides a useful metric for the potential for adverse stormwater impacts. While runoff from impervious areas in developed portions of the watershed may be contributing bacteria to the Clear River, as discussed in Section 6.3 of the Core TMDL Document, as a general rule, impaired streams with watersheds having less than 10% impervious cover are assumed to be caused by sources other than urbanized stormwater runoff.

The Rhode Island Department of Transportation (RIDOT) has identified and mapped stormwater outfalls within the Town of Burrillville. As of March 2010, the Town of Burrillville has identified and mapped nearly all of the stormwater outfalls within the town. The Clear River watershed was shown to receive discharges from multiple stormwater outfalls, particularly in the high-density commercial and residential areas in the Villages of Pascoag and Harrisville (Figures 2 and 3).

Existing Local Management and Recommended Next Steps

Additional bacteria data collection would be beneficial to support identification of sources of potentially harmful bacteria in the Clear River watershed. These activities could include sampling at several different locations and under different weather conditions (e.g., wet and dry). Field reconnaissance surveys focusing on stream buffers, stormwater runoff, and other source identification would also be beneficial. Based on existing ordinances and previous investigations, the following steps are recommended to support water quality goals.

Onsite Wastewater Management

The majority of residents within the Clear River watershed rely on OWTS. Currently, the Town of Burrillville does not have an Onsite Wastewater Management Plan or a septic system ordinance (RIDEM, 2008b). As part of the onsite wastewater planning process, Burrillville should adopt ordinances to establish enforceable mechanisms to ensure that existing OWTS are properly operated and maintained. RIDEM recommends that all communities create an inventory of onsite systems through mandatory inspections. Inspections encourage proper maintenance and identify failed and sub-standard systems. Policies that govern the eventual replacement of sub-standard OWTS within a reasonable time frame should be adopted. The Rhode Island Wastewater Information System (RIWIS) can help develop an initial inventory of OWTS and can track voluntary inspection and pumping programs (RIDEM, 2010b).

The Town of Burrillville is currently not eligible for the Community Septic System Loan Program (CSSLP). CSSLP provides low-interest loans to residents to help with maintenance and replacement of OWTS. It is recommended that the town develop a program to assist citizens with the replacement of older and failing systems.

Burrillville Wastewater Treatment Facility

The Burrillville WWTF (RIPDES permit RI0100455) is located in the Town of Burrillville within the watershed for this impaired segment of the Clear River. The allocations for the Burrillville WWTF are the same in dry and wet weather and, consistent with EPA policy, are set to meet the bacteria standards at the point of discharge. The RIPDES Permit for the Burrillville WWTF expires in 2011 and RIDEM is in the process of reissuing the permit. The reissued permit will contain limits consistent with water quality regulations and the wasteload allocation, including an enterococci limit that is consistent with the RI Water Quality Regulations. The Class B1 enterococci criterion is a geometric mean concentration of 54 colonies per 100 mL.

Wildlife and Domestic Animal Waste

Burrillville's education and outreach programs should highlight the importance of picking up after dogs and other pets and not feeding waterfowl, particularly around the many small ponds and larger reservoirs within the watershed. Animal wastes should be disposed of away from any waterway or stormwater system. Burrillville should work with volunteers from the town to map locations where animal waste is a significant and chronic problem. This work should be incorporated into the municipalities' Phase II plans and should result in an evaluation of strategies to reduce the impact of animal waste on water quality. This may include installing signage, providing pet waste receptacles or digester systems in high-use areas, enacting ordinances requiring clean-up, and targeting educational and outreach programs in problem areas.

Towns and residents can also take several measures to minimize waterfowl-related impacts. They can allow tall, coarse vegetation to grow in areas along the shores of reservoirs and Ponds, which are frequented by waterfowl. Waterfowl, especially grazers like geese, prefer easy access to the water. Maintaining an uncut vegetated buffer along the shore will make the habitat less desirable to geese and encourage migration. With few exceptions, Part XIV, Section 14.13, of Rhode Island's Hunting Regulations prohibits feeding wild waterfowl at any time in the state of Rhode Island. Educational programs should emphasize that feeding waterfowl, such as ducks, geese, and swans, may contribute to water quality impairments in the Clear River and can harm human health and the environment. Burrillville should ensure that mention of this regulation is included in their SWMPPs.

Stormwater Management

The Town of Burrillville (RIDPES permit RIR040001) and RIDOT (RIDPES permit RIR040036) are municipal separate storm sewer system (MS4) operators in the Clear River watershed and have prepared Phase II Stormwater Management Plans (SWMPP). Most of the watershed area is regulated under the Phase II program. Burrillville's SWMPP outlines goals for the reduction of stormwater runoff to the Clear River through the implementation of Best Management Practices (BMPs). Many of these BMPs are now in place, including mapping all stormwater outfalls, instituting annual inspections and cleaning of the town's catch basins, implementing an annual street sweeping program, adopting construction erosion and sediment control and post-construction stormwater ordinances, and conducting public education activities (RIDEM, 2010a).

Burrillville has adopted an illicit discharge detection and elimination ordinance (RIDEM, 2010a). These ordinances prohibit illicit discharges to the MS4 and provide an enforcement mechanism. Burrillville should focus efforts of detecting illicit discharges in the commercial and residential areas in the Villages of Pascoag and Harrisville near the Clear River. Illicit discharges can also be identified through

continued dry-weather outfall sampling and microbial source tracking. Burrillville should also implement a program to evaluate its sanitary sewer system to identify any leaks and overflows.

RIDOT's SWMPP and its 2011 Compliance Update outline its goals for compliance with the General Permit statewide. It should be noted that RIDOT has chosen to enact the General Permit statewide, not just for the urbanized and densely populated areas that are required by the permit. RIDOT has finished mapping its outfalls throughout the state and is working to better document and expand its catch basin inspection and maintenance programs along with its BMP maintenance program. Storm Water Pollution Prevention Plans (SWMPP) are being utilized for RIDOT construction projects. RIDOT also funds the University of Rhode Island Cooperative Extension's Stormwater Phase II Public Outreach and Education Project, which provides participating MS4s with education and outreach programs that can be used to address TMDL public education recommendations.

As it is assumed that stormwater runoff is not the major contributor of bacteria to this reach of the Clear River (Segment D) based on the watershed's imperviousness, Burrillville and RIDOT will have no changes to their Phase II permit requirements and no TMDL Implementation Plan (TMDL IP) will be required at this time.

Burrillville recently took a positive step towards reducing stormwater runoff to the Clear River. The town was awarded a \$61,000 grant under Rhode Island's Nonpoint Source Program for the installation of porous pavement at the town library's overflow parking lot. The lot is directly adjacent to the Clear River and the pavement was installed in November of 2010 (Nonpoint Source, 2010). The town should continue to pursue grants and support projects that help reduce the volume of stormwater entering the Clear River.

Land Use Protection

There are large sections of protected forest within the Clear River watershed. The Town of Burrillville's Comprehensive Plan, outlines specific policies to preserve natural areas. Over 7,000 acres are zoned for conservation and open space and there are over 10 square miles of open space within the town (Burrillville, 2004).

Preserving these natural areas is important because woodland and wetland areas within the Clear River watershed absorb and filter pollutants from stormwater and help protect both water quality in the stream and stream channel stability. As these areas represent approximately 85% of the land use in the Clear River watershed, it is important to continue the preservation of these undeveloped areas and to institute controls on development in the watershed.

The steps outlined above will support the goal of mitigating bacteria sources and meeting water quality standards in the Clear River.

Table 1: Clear River Segment 5D Bacteria Data

Waterbody ID: RI0001002R-05D

Watershed Planning Area: 8 – Branch - Blackstone

Characteristics: Freshwater, Class B1, Primary and Secondary Contact Recreation, Fish and Wildlife Habitat

Impairment: Enterococci (colonies/100mL)

Water Quality Criteria for Enterococci: Geometric Mean: 54 colonies/100 mL

Percent Reduction to meet TMDL: 34% (Includes 5% Margin of Safety)

Data: 2008-2009 from RIDEM

Single Sample Enterococci (colonies/100 mL) Results for the Clear River (Segment 5D) (2008-2009) with Geometric Mean Statistics

Station Name	Station Location	Date	Result	Wet/Dry	Geometric Mean
CLR06	Clear River at Oakland (Victory Hwy) USGS 01111330	7/15/2009	1850	Dry	76 (34%)*
CLR06	Clear River at Oakland (Victory Hwy) USGS 01111330	5/20/2009	24	Dry	
CLR06	Clear River at Oakland (Victory Hwy) USGS 01111330	5/20/2009	71	Dry	
CLR06	Clear River at Oakland (Victory Hwy) USGS 01111330	9/18/2008	39	Dry	
CLR06	Clear River at Oakland (Victory Hwy) USGS 01111330	9/18/2008	21	Dry	
Shaded cells indicate an exceedance of water quality criteria Includes 5% Margin of Safety					

Wet and Dry Weather Geometric Mean Enterococci Values for Station CLR06

Station Name	Station Location	Years Sampled	Number of Samples		Geometric Mean		
			Wet	Dry	All	Wet	Dry
CLR06	Clear River at Oakland (Victory Hwy) USGS 01111330	2008-2009	0	5	76	NA	76
Shaded cells indicate an exceedance of water quality criteria Weather condition determined from the Weather Underground rain gage in Lincoln, RI							

References

- Burrillville (2004). RIPDES Stormwater Phase II Regulations. Five-Year Municipal Stormwater Management Program Plan.
- Mallin, *et. al.* (2007). Mallin, M.A., L.B. Cahoon, B.R. Toothman, D.C. Parsons, M.R. McIver, M.L. Ortwine and R.N. Harrington. 2007. Impacts of a raw sewage spill on water and sediment quality in an urban estuary. *Mar. Pollution Bull.* 54:81-88
- RIDEM (2007). State of Rhode Island and Providence Plantations 2007 Final Consolidated Assessment and Listing Methodology for 305(b) and 303(d) Integrated Water Quality monitoring and Assessment Reporting. Online:
www.dem.ri.gov/programs/benviron/water/quality/surfwq/pdfs/calm.pdf.
- RIDEM (2008a). State of Rhode Island and Providence Plantations 2008 303(d) List – List of Impaired Water Bodies. Rhode Island Department of Environmental Management.
- RIDEM (2008b). Rhode Island Department of Environmental Management Office of Water Resources. Summary of Rhode island Municipal Onsite Wastewater Programs. Online:
www.dem.ri.gov/programs/benviron/water/finance/non/pdfs/munisep.pdf.
- RIDEM (2009). State of Rhode Island and Providence Plantations Water Quality Regulations. Amended December, 2009. Rhode Island Department of Environmental Management.
- RIDEM (2010a). MS4 Compliance Status Report for RI Statewide Bacteria TMDL. Rhode Island Department of Environmental Management.
- RIDEM (2010b). Total Maximum Daily Load Analysis for the Pawcatuck River and Little Narragansett Bay Waters (Bacteria Impairments). Rhode Island Department of Environmental Management.
- RI HEALTH (2003). Aquidneck Island Drinking Water Assessment Results, Source Water Protection Assessment conducted by the University of Rhode Island for the Rhode Island Department of Health, Office of Drinking Water Quality.
- RIPDES (2006). RIPDES Small MS4 Annual Report, General Information Page. Rhode Island Department of Environmental Management, Office of Water Resources. Online:
[www.burrillville.org/Public_Documents/BurrillvilleRI_DPW/2006 MS4 AR and Instructions2.pdf](http://www.burrillville.org/Public_Documents/BurrillvilleRI_DPW/2006_MS4_AR_and_Instructions2.pdf).
- Town of Burrillville (2005). Town of Burrillville Comprehensive Plan, 5-Year Update. Online:
www.burrillville-ri.gov/Public_Documents/BurrillvilleRI_Planning/comp_toc.
- USEPA (2002). Onsite Wastewater Treatment Systems Manual – Office of Water, Office of Research and Development – EPA/625/R-00/008. Online:
www.epa.gov/owm/septic/pubs/septic_2002_osdm_all.pdf.
- WFP (2002). Town of Burrillville, Rhode Island. Wastewater Facilities Plan: Volume 1 of 2. Prepared for: Town of Burrillville, prepared by: Beta Group Inc.