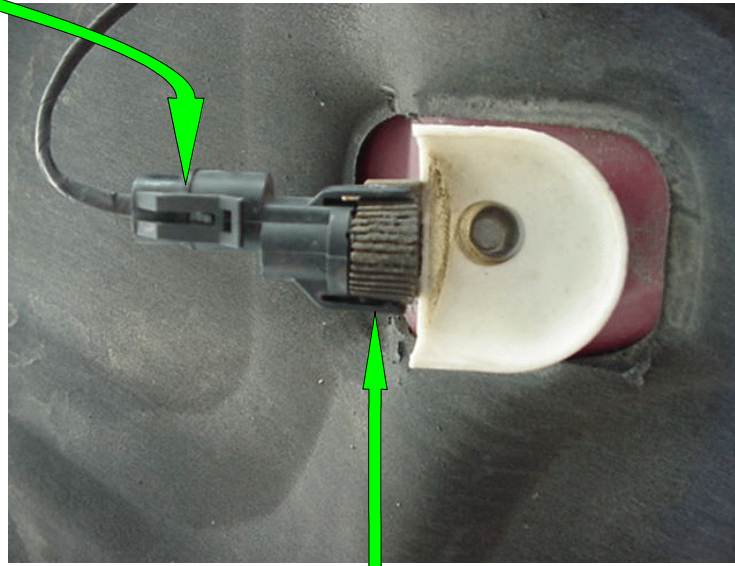
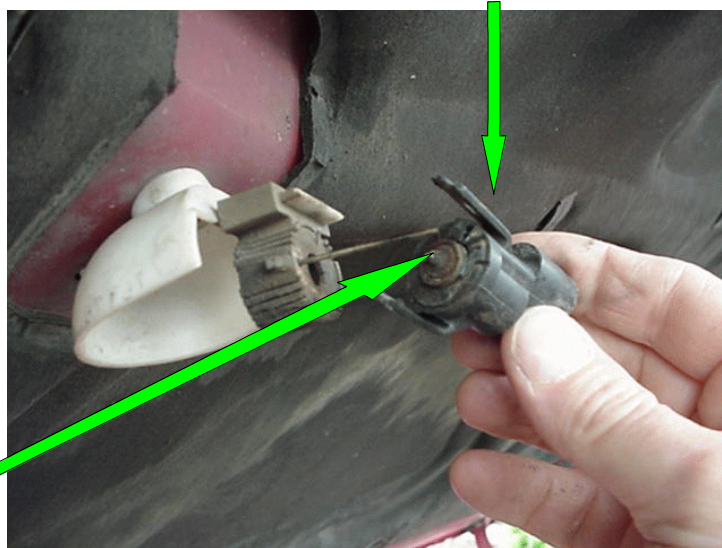


Removal and Replacement of Mercury Switch in 1985-1995 Chrysler Hood Lighting Assembly

1. Remove the wiring clip from the back of assembly by sliding a screwdriver under the clip and sliding the clip back to remove the power source



2. Remove the mercury switch holder from the back of the lighting assembly by sliding a screwdriver under the two wing clips and pulling until the switch holder clears the copper rod on the attached section



3. Remove the mercury switch from the back of the lighting assembly by hand and replace it with a ball-bearing switch. Put the assembly back together by doing steps 2 and 1 in reverse

* Most Chrysler products have molded lighting assemblies where the mercury switch cannot be replaced. The type seen in this document is found in 1985-1995 Jeeps, Chrysler /Dodge trucks, and some SUVs