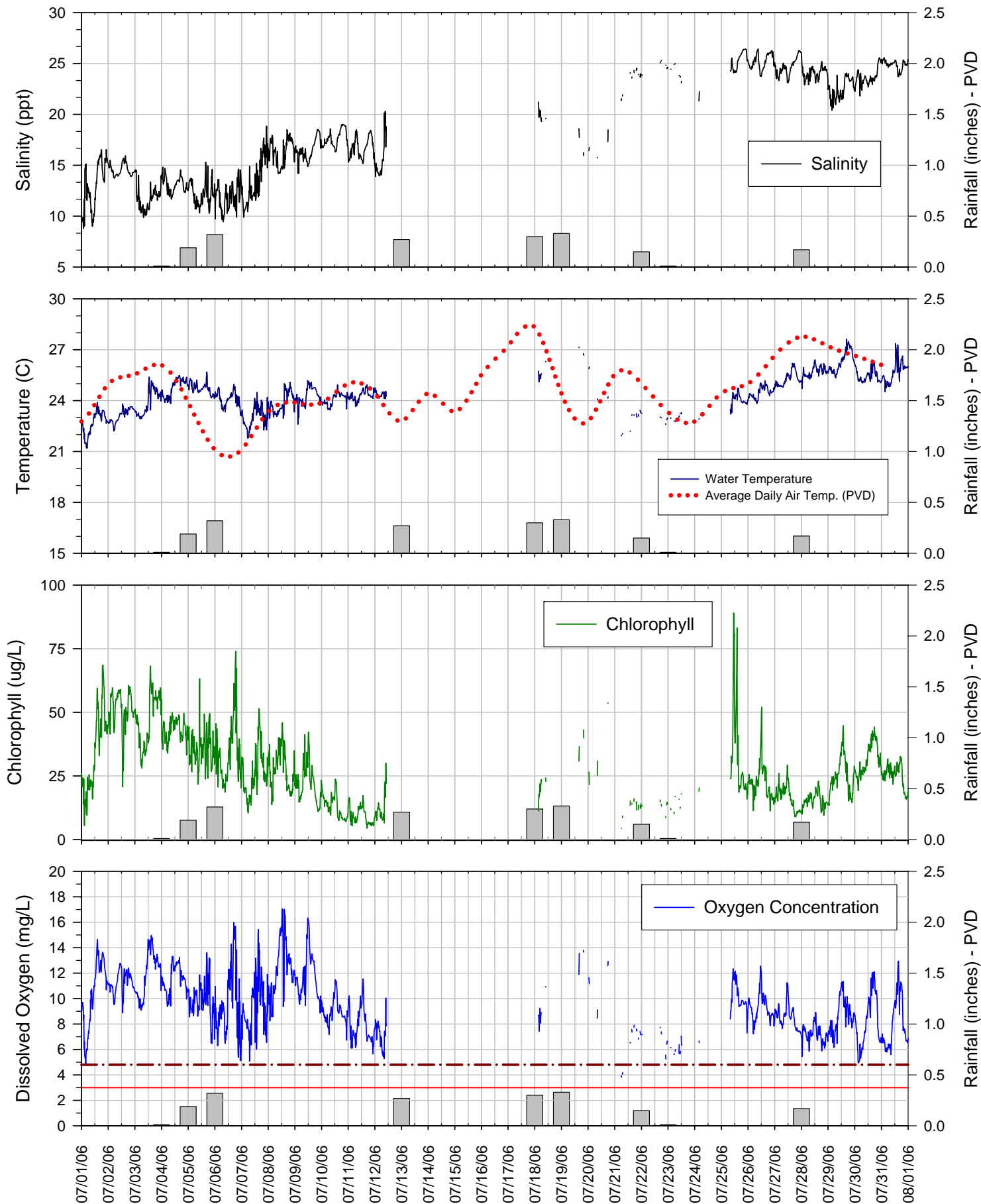
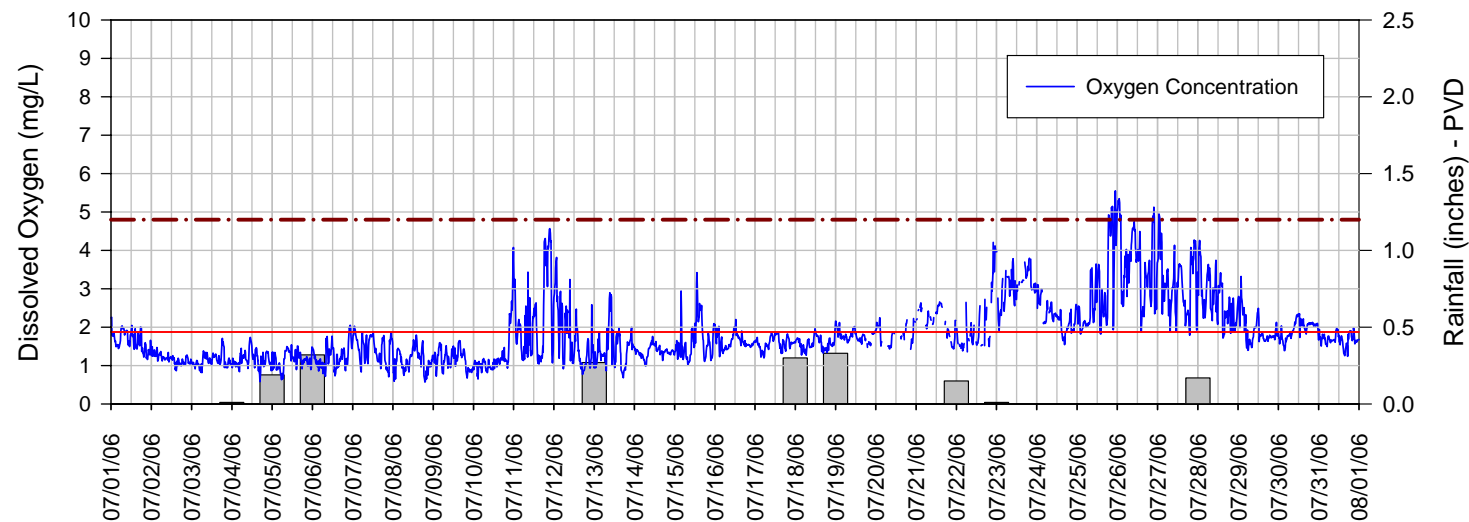
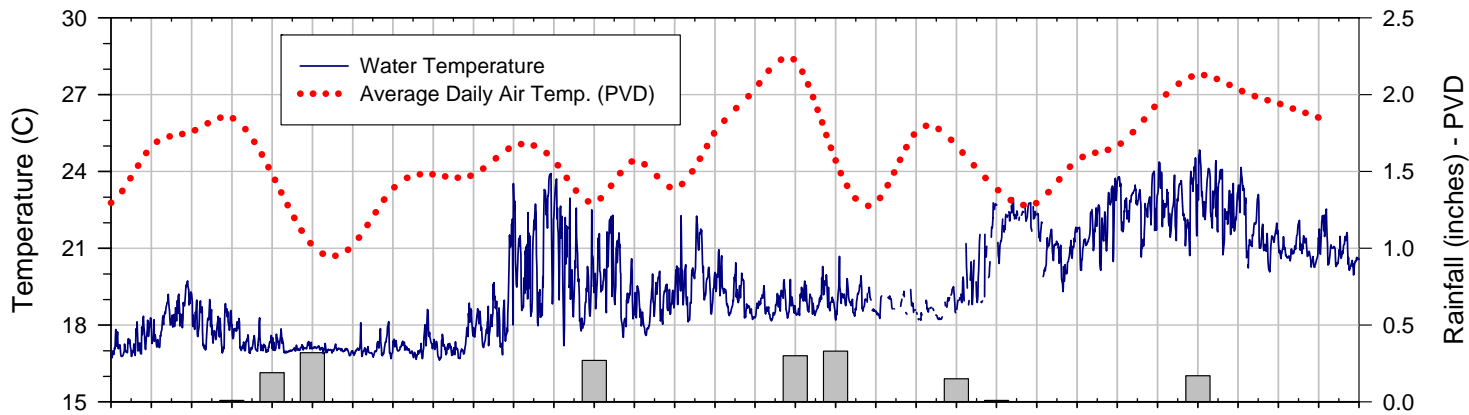
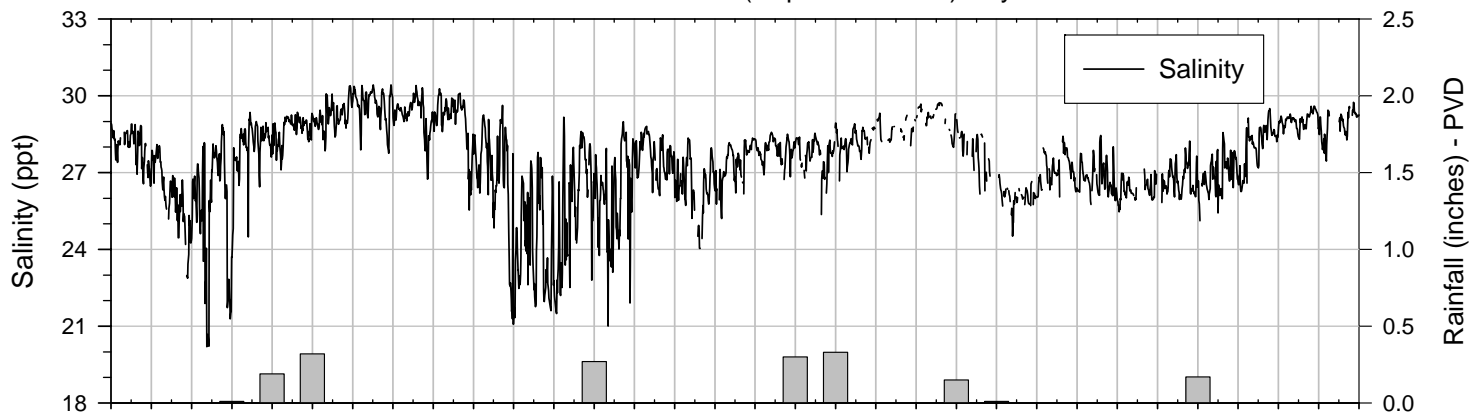


Surface Sonde at Bullock Reach (Depth ~.5 meter) July 2006



The data displayed on this chart is provisional and is subject to change based on post-season quality control analyses. This station is maintained by NBC and RIDEM - Office of Water Resources.

Bottom Sonde at Bullock Reach (Depth ~9 meters) July 2006



The data displayed on this chart is provisional and is subject to change based on post-season quality control analyses. This station is maintained by NBC and RIDEM - Office of Water Resources .