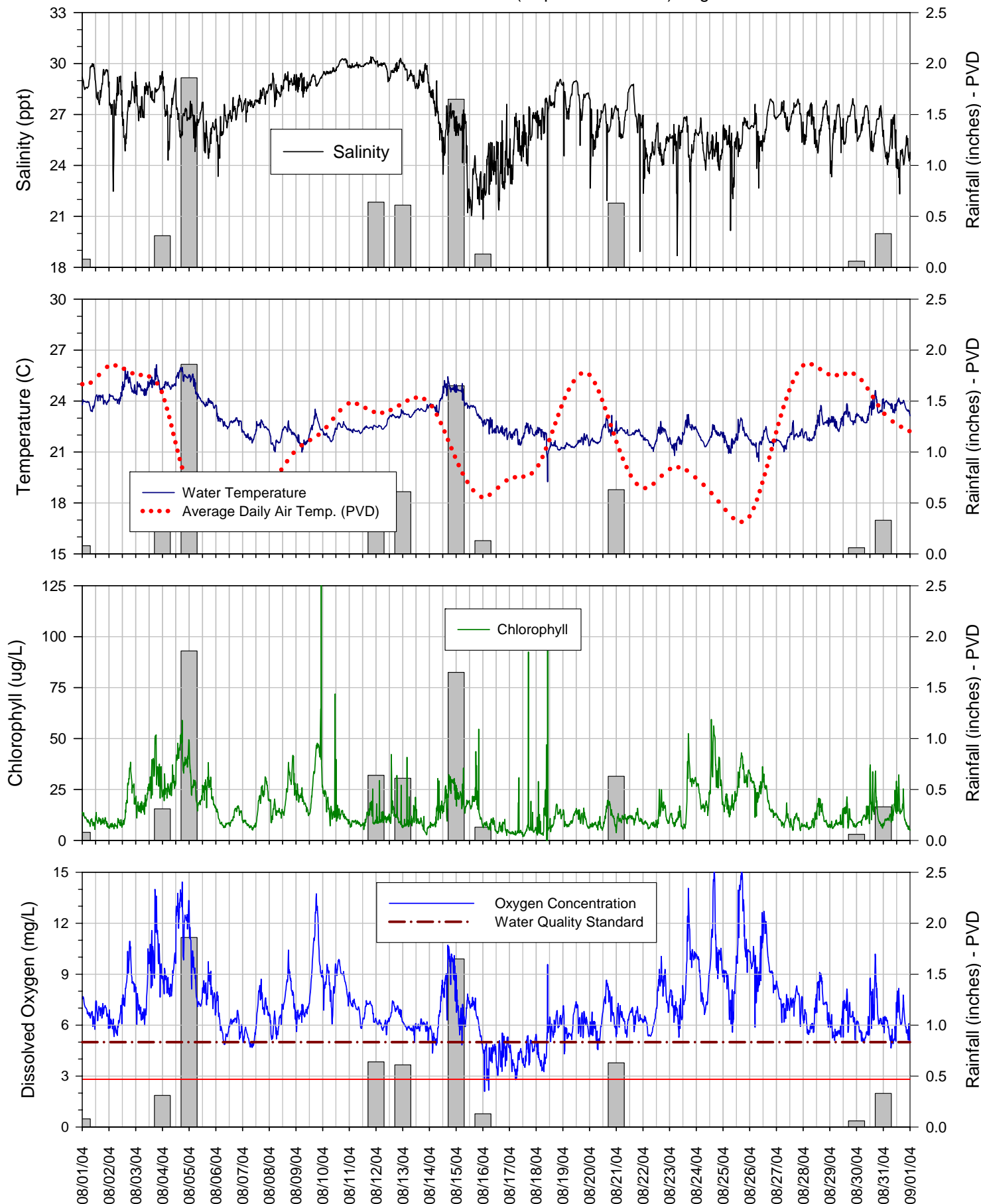
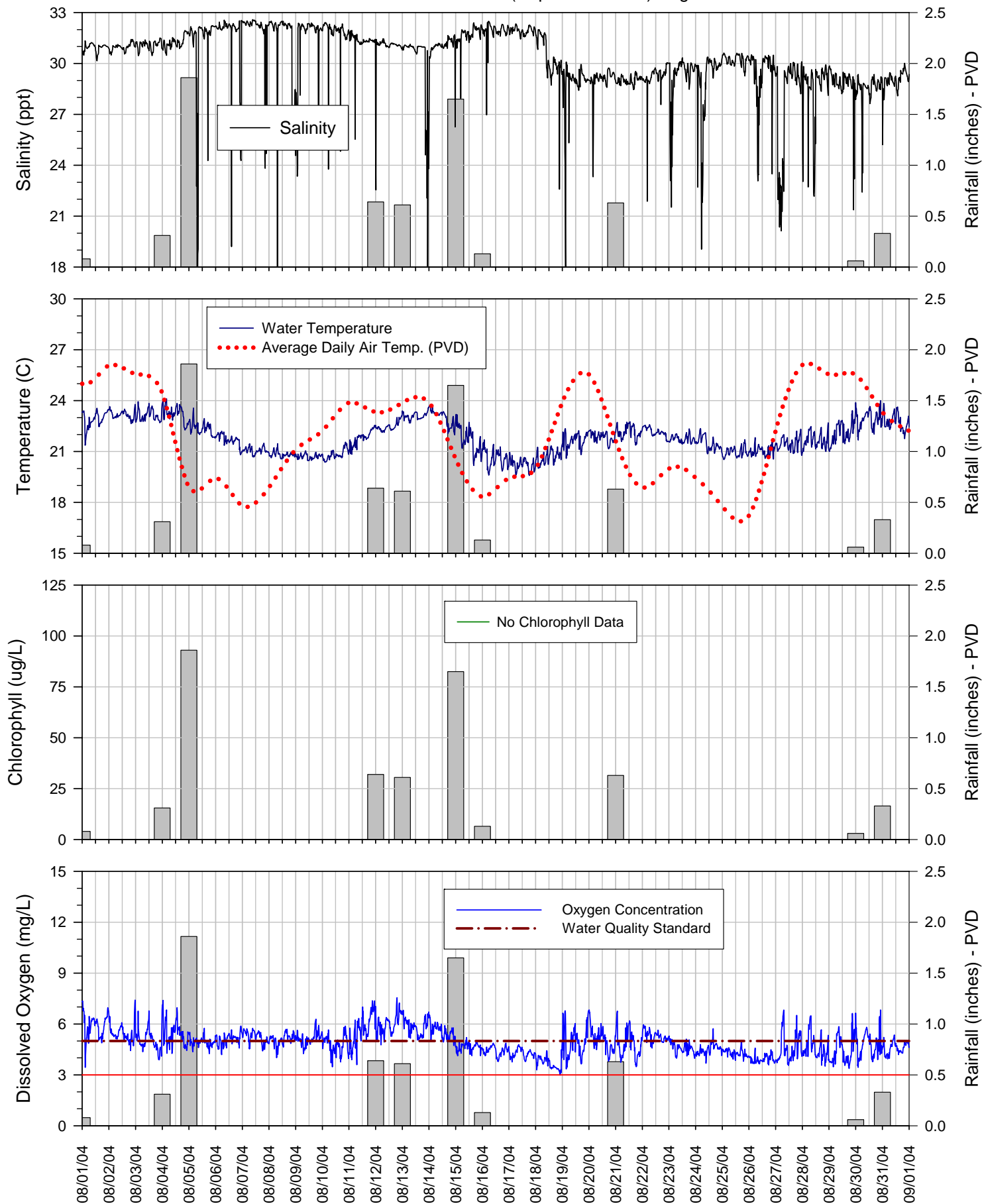


### Surface Sonde at Bullocks Reach (Depth ~0.5 meters) August 2004



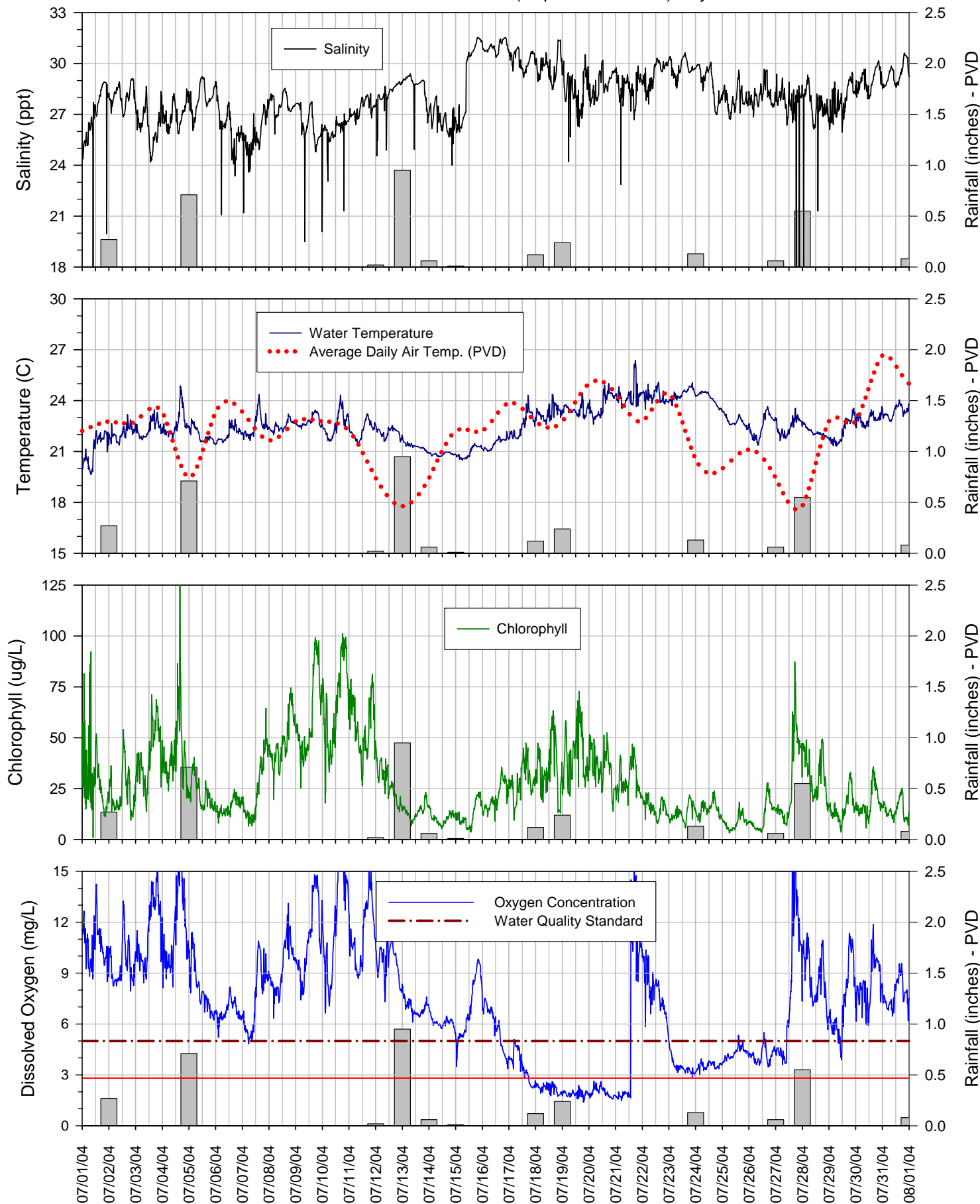
The data displayed on this chart is provisional and is subject to change based on post-season quality control analyses. This station is maintained by the Narragansett Bay Commission.

### Bottom Sonde at Bullocks Reach (Depth ~7 meters) August 2004



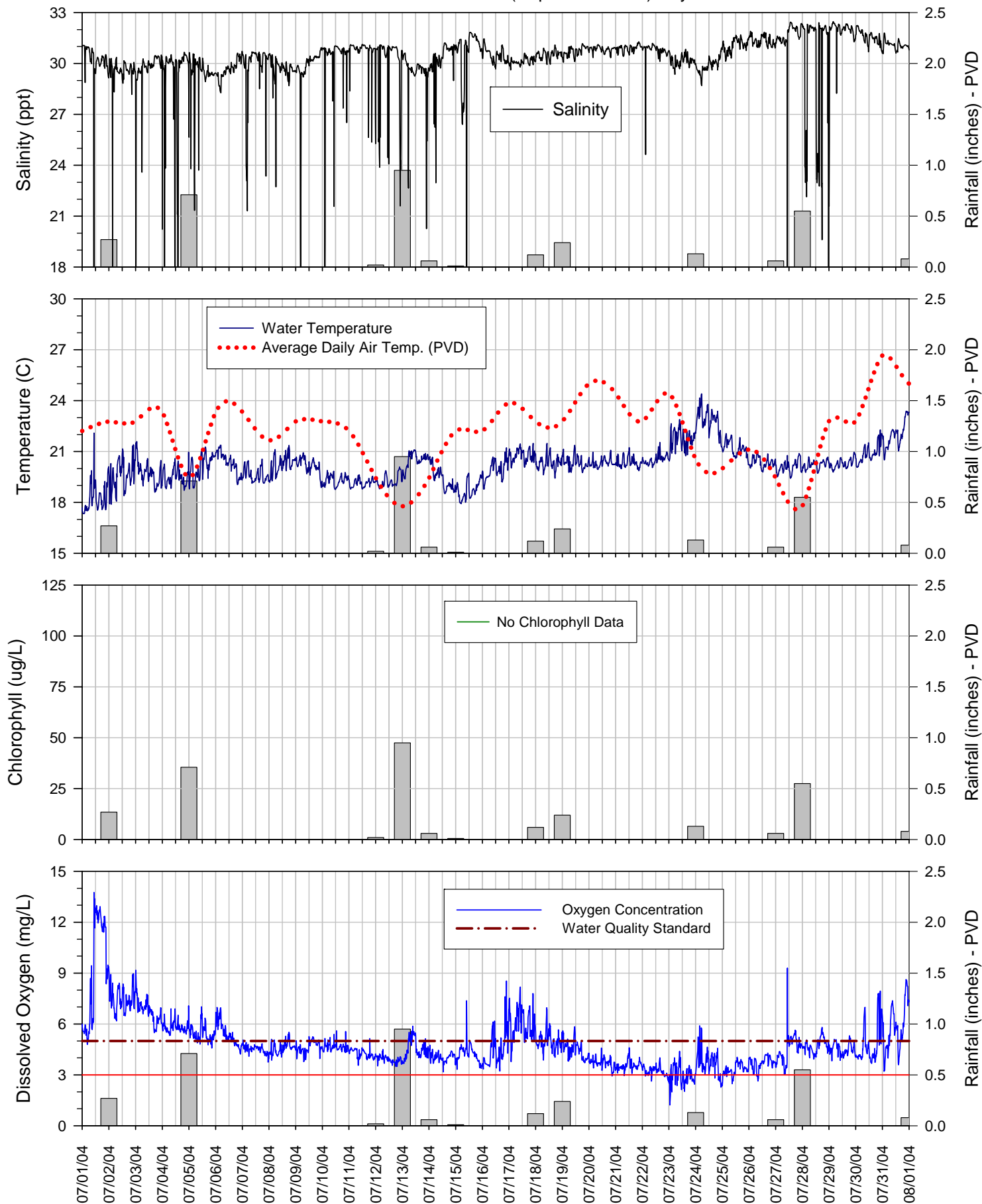
The data displayed on this chart is provisional and is subject to change based on post-season quality control analyses. This station is maintained by the Narragansett Bay Commission.

### Surface Sonde at Bullocks Reach (Depth ~0.5 meters) July 2004



The data displayed on this chart is provisional and is subject to change based on post-season quality control analyses. This station is maintained by the Narragansett Bay Commission.

### Bottom Sonde at Bullocks Reach (Depth ~7 meters) July 2004



The data displayed on this chart is provisional and is subject to change based on post-season quality control analyses. This station is maintained by the Narragansett Bay Commission.