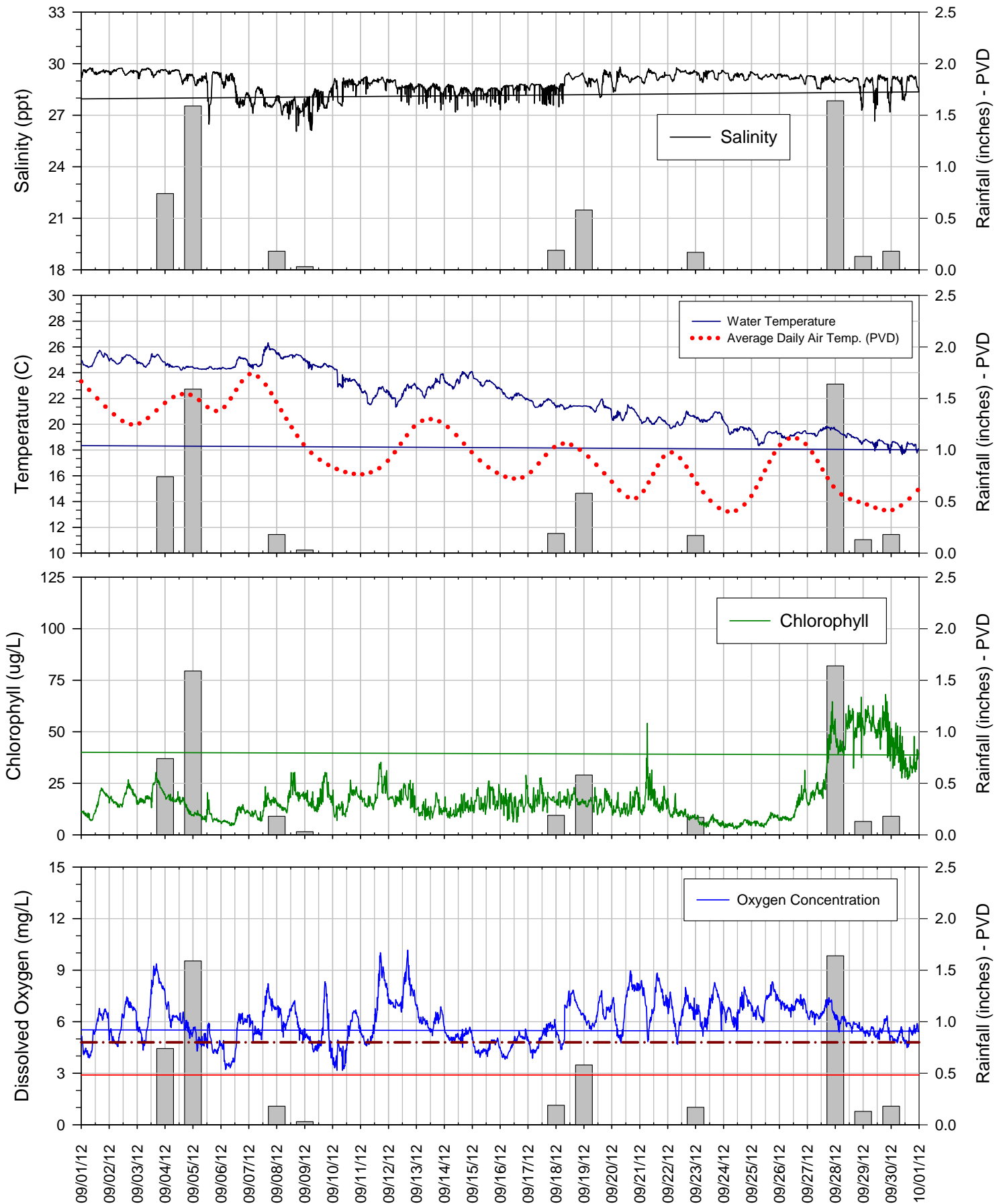
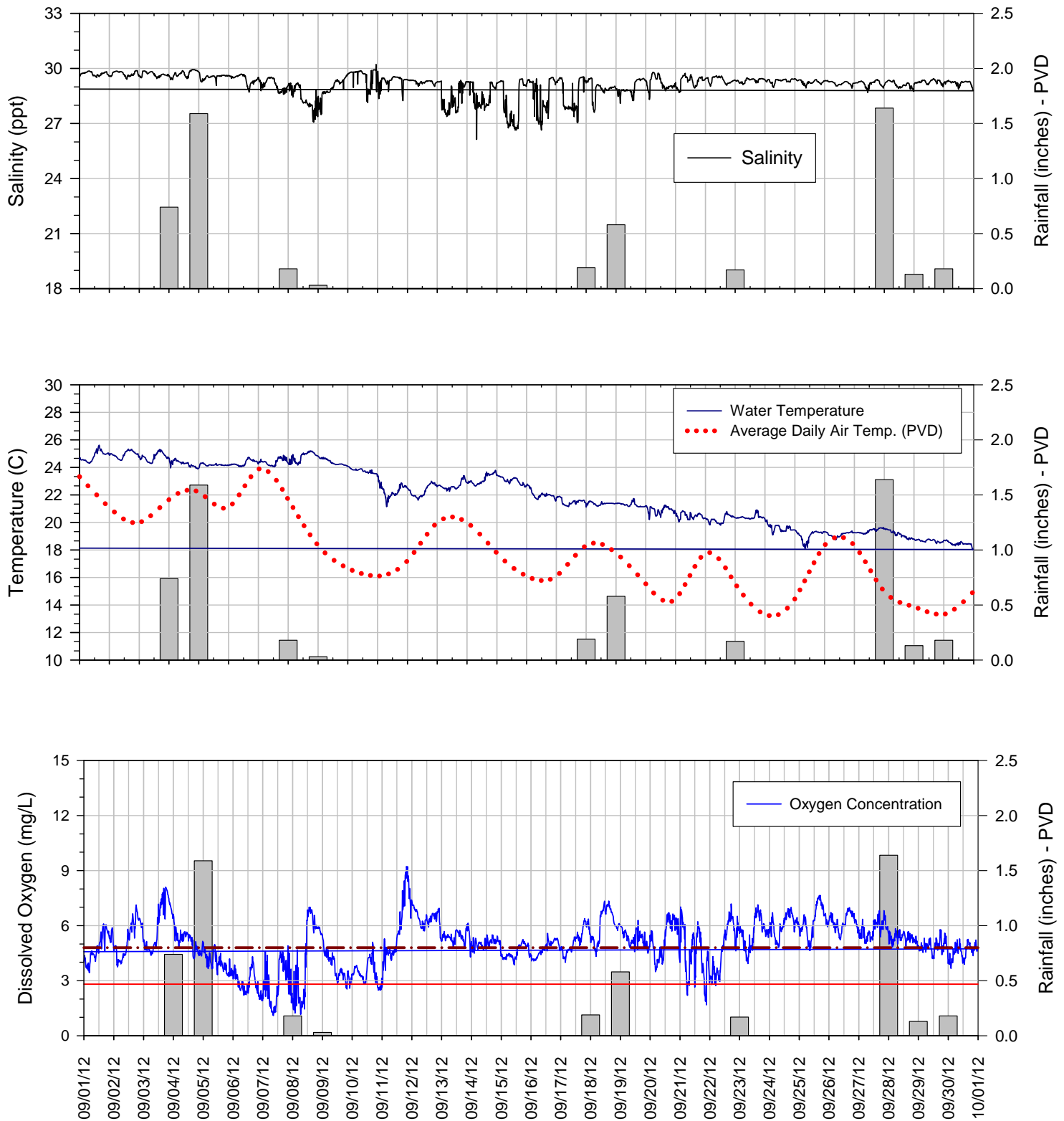


Surface Sonde at Conimicut Point (Depth ~1 meter) September 2012



The data displayed on this chart is provisional and is subject to change based on post-season quality control analyses. This station is maintained by RIDEM - Office of Water Resources and URI/GSO.

Bottom Sonde at Conimicut Point (Depth ~7.5 meters) September 2012



The data displayed on this chart is provisional and is subject to change based on post-season quality control analyses. This station is maintained by RIDEM - Office of Water Resources and URI/GSO.